



jordan fishwick

CHEADLE
Warley Close



Warley Close, Cheadle, SK8 2BJ

Guide Price £325,000

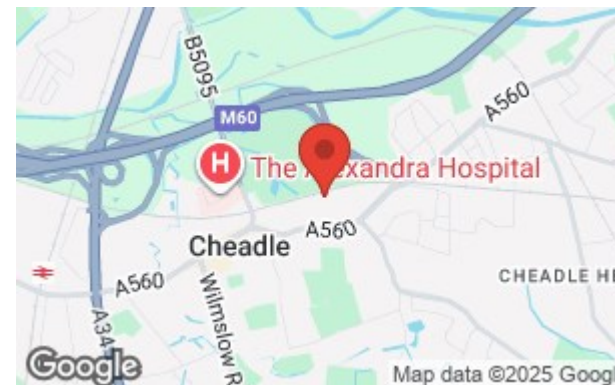


The Property

An appealing family home with three generous bedrooms, a lovely south facing garden, driveway and a great location, tucked away on a secluded cul-de-sac which is within a short stroll of Cheadle Village and Abney Hall Park. 1096 sq ft. uPVC double glazing and gas central heating are both in place, with the well presented living space including a spacious L-shaped lounge & dining room with attractive fireplace, breakfast kitchen with a range of fitted units, downstairs WC, entrance hall with access to the integral walk-in storage space, three bedrooms and the bathroom, with a white suite and chrome fittings. There is a pleasant flowerbed garden at the front with adjoining driveway, whilst to the rear is the south facing garden with decked seating area, stone chipped section and mature borders. * No onward chain*

Directions

SK8 2BJ



- Appealing family home
- Secluded cul-de-sac position
- Lovely south facing garden
- Three generous bedrooms
- Spacious L-shaped lounge/dining room
- Fitted breakfast kitchen
- Excellent storage & downstairs WC
- uPVC double glazing & gas central heating
- Great location close to Cheadle Village
- No onward chain

Postcode - SK8 2BJ

EPC Rating - D

Floor Area - 1096.00 sq ft

Local Authority - SMBC

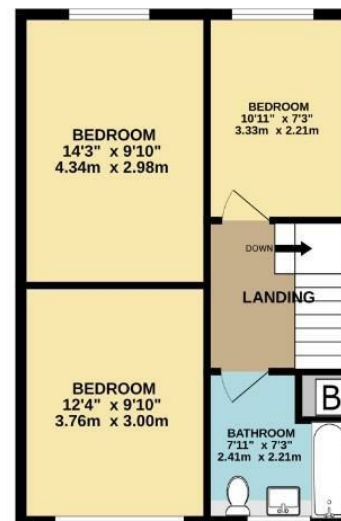
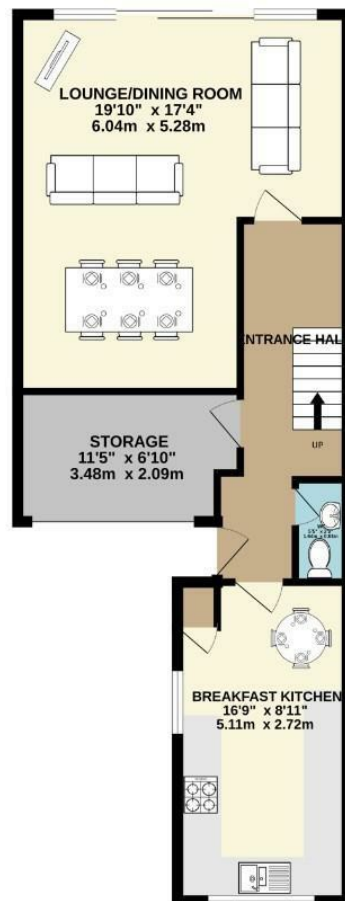
Council Tax - C



GROUND FLOOR
634 sq.ft. (58.9 sq.m.) approx.



1ST FLOOR
462 sq.ft. (42.9 sq.m.) approx.



TOTAL FLOOR AREA : 1096 sq.ft. (101.8 sq.m.) approx.
Measurements are approximate. Not to scale. Illustrative purposes only.
Made with Metropix ©2025



These particulars are believed to be accurate but they are not guaranteed and do not form a contract. Neither Jordan Fishwick nor the vendor or lessor accept any responsibility in respect of these particulars, which are not intended to be statements or representations of fact and any intending purchaser or lessee must satisfy himself by inspection or otherwise as to the correctness of each of the statements contained in these particulars. Any floorplans on this brochure are for illustrative purposes only and are not necessarily to scale.

Offices also at: Wilmslow, Macclesfield, Hale, Sale, Chorlton, Glossop, Manchester & Salford

757-759 Wilmslow Road, Didsbury Village, Manchester

0161 445 4480

didsbury@jordanfishwick.co.uk
www.jordanfishwick.co.uk